

UKG Ready
Release 105 Highlights

Explore what's new
by clicking a section below:



Cross-Suite

Workforce
Management

Payroll

HR

Talent and Culture

Release Resources

UKGTM Ready

May 2026

Release Highlights

Release 105





Explore what's new
by clicking a section below:

Cross-Suite

Workforce
Management

Payroll

HR

Talent and Culture

Release Resources

Bryte AI Assistant

HR Actions Enhancements

Reporting Enhancements

Conversational Reporting

Manager Controls for
Document Types

Mailbox Modernization

Twilio SMS Compliance
Opt-In Consent

Passkey Authentication

People Insights Rebranding

Cross-Suite

Get a Sneak Peek of:

Bryte AI for Ready

- ▶ Bryte AI Assistant

Experience

- ▶ HR Actions Enhancements
- ▶ Reporting Enhancements
- ▶ Conversational Reporting
- ▶ Manager Controls for Document Types
- ▶ Mailbox Modernization
- ▶ Twilio SMS Compliance Opt-In Consent

Core Platform

- ▶ Passkey Authentication

Workforce Insights

- ▶ People Insights Rebranding





Explore what's new
by clicking a section below:

Cross-Suite

Workforce
Management

Payroll

HR

Talent and Culture

Release Resources

Bryte AI Assistant

HR Actions Enhancements

Reporting Enhancements

Conversational Reporting

Manager Controls for
Document Types

Mailbox Modernization

Twilio SMS Compliance
Opt-In Consent

Passkey Authentication

People Insights Rebranding

Cross-Suite – Bryte AI for Ready

Bryte AI Assistant

ON

Feature
Delivered



USA



Customer
Idea



Bryte AI
Assistant

Introducing a new, conversational assistant that will help users to navigate the UKG Ready solution and complete self-service tasks using natural language. The Bryte AI Assistant will include several Employee-Self Service (ESS) and Manager Self-Service (MSS) Assistants across many areas of the UKG Ready solution.

For details on which Assistants will be available for different UKG Ready modules, navigate through the sections of the Release Highlights.



Additional Feature Resources

[Product Spotlight Video](#)

[UKG Bryte AI for Ready Resource Page](#)

Important: The Bryte AI Assistant is part of the Bryte AI for Ready — AI Assistant add-on that requires an additional cost. If you are interested in adding this to your solution, please reach out to your account manager.





Explore what's new
by clicking a section below:

Cross-Suite

Workforce
Management

Payroll

HR

Talent and Culture

Release Resources

Bryte AI Assistant

HR Actions Enhancements

Reporting Enhancements

Conversational Reporting

Manager Controls for
Document Types

Mailbox Modernization

Twilio SMS Compliance
Opt-In Consent

Passkey Authentication

People Insights Rebranding

HR Actions Enhancements



USA | CAN |
EMEA | APAC



Customer
Idea

New enhancements to the HR Actions reporting and assignment functionality will be available, including:

Reporting enhancements:

- The All Pending HR Request widget on the employee profile will display both All and Pending HR Actions.
- A new Workflow column will be added to the *HR Actions* setup report.
- The default number of HR Actions displayed on the Available tab will be increased to 100 per page.

Assignment enhancement:

- A new Restrict Concurrent Assignment checkbox setting within the HR Action configuration will be available. When this setting is turned on and an HR Action is already assigned and in progress, the system will not allow a new action of the same name to be assigned until the existing workflow is complete or cancelled.



Explore what's new
by clicking a section below:

Cross-Suite

Workforce
Management

Payroll

HR

Talent and Culture

Release Resources

Bryte AI Assistant

HR Actions Enhancements

Reporting Enhancements

Conversational Reporting

Manager Controls for
Document Types

Mailbox Modernization

Twilio SMS Compliance
Opt-In Consent

Passkey Authentication

People Insights Rebranding

Reporting Enhancements



USA | CAN |
EMEA | APAC



Customer
Idea

New ease of use enhancements to the Reporting functionality will be available, including:

- The option to drag and drop non-frozen columns into the frozen columns section and vice versa.
- A new shortcut for opening the Add/Remove Columns and Manage Custom Columns options will be available directly on the reporting screen.
- Improved UI for column settings drop-down to help identify what options are available and how to use them.
- The *Report Settings Maintenance* report will be available in Holding companies.



Explore what's new
by clicking a section below:

Cross-Suite

Workforce
Management

Payroll

HR

Talent and Culture

Release Resources

Bryte AI Assistant

HR Actions Enhancements

Reporting Enhancements

Conversational Reporting

Manager Controls for
Document Types

Mailbox Modernization

Twilio SMS Compliance
Opt-In Consent

Passkey Authentication

People Insights Rebranding

Conversational Reporting



USA | CAN |
EMEA | APAC



Customer
Idea



Bryte AI
Assistant

New reporting functionality, powered by Bryte AI, that will allow users to engage with a conversational AI assistant to ask data-driven questions across popular reports. These capabilities will be included in three key reports:

- *Employee Information* report
- *All Time Entries* report
- *Job Requisitions* report

Important Notes:

- Conversational Reporting will be rolled out in phases over the next few months. When available, the new Report Highlights button will appear on the three reports and in-product guides will be launched to notify you it is available in your solution.
- Conversational Reporting will be available as an additional Assistant within the Bryte AI Assistant panel in a future release.

Important: Conversational Reporting is part of the Bryte AI for Ready — AI Assistant add-on that requires an additional cost. If you are interested in adding this to your solution, please reach out to your account manager.



Explore what's new
by clicking a section below:

Cross-Suite

Workforce
Management

Payroll

HR

Talent and Culture

Release Resources

Bryte AI Assistant

HR Actions Enhancements

Reporting Enhancements

Conversational Reporting

Manager Controls for
Document Types

Mailbox Modernization

Twilio SMS Compliance
Opt-In Consent

Passkey Authentication

People Insights Rebranding

Manager Controls for Document Types

ON

Feature
Delivered



USA | CAN |
EMEA | APAC

A new Reports Only document visibility filter will be available to narrow permissions on which documents are available. When turned on, this permission will ensure that managers can see applicable documents for their direct reports while preventing access to those same documents on their own employee record.



Explore what's new
by clicking a section below:

Cross-Suite

Workforce
Management

Payroll

HR

Talent and Culture

Release Resources

Bryte AI Assistant

HR Actions Enhancements

Reporting Enhancements

Conversational Reporting

Manager Controls for
Document Types

Mailbox Modernization

Twilio SMS Compliance
Opt-In Consent

Passkey Authentication

People Insights Rebranding

Mailbox Modernization



USA | CAN |
EMEA | APAC



Customer
Idea

To continue bringing a modern experience to the UKG Ready solution, new visual changes are coming to the Mailbox, including My Notifications, My To Do Items, and My Checklists. Once applied, changes will be reflected in the following areas:

- Pagination and filtering updates
- Relocation of action buttons within the To Do Items and Checklists
- Organization of details within To Do Items will be updated for better readability

Important: This modernization will be available in the weeks following the release. For more information on when this will be available in your solution, please follow the [UKG Ready \(Announcements\)](#) group in the UKG Community™.



Explore what's new
by clicking a section below:

Cross-Suite

Workforce
Management

Payroll

HR

Talent and Culture

Release Resources

Bryte AI Assistant

HR Actions Enhancements

Reporting Enhancements

Conversational Reporting

Manager Controls for
Document Types

Mailbox Modernization

Twilio SMS Compliance
Opt-In Consent

Passkey Authentication

People Insights Rebranding

Cross-Suite – Experience

Twilio SMS Compliance Opt-In Consent

ON

Feature
Delivered



USA | CAN |
EMEA | APAC

Twilio has updated its SMS campaign registration requirements and new opt-in consent will be available to align with the new requirements. A new section will be available in the Company Setup where administrators can include a link to their Terms of Service and Privacy Policy that will appear within a pop-up when an employee goes to opt in for SMS in the Notification Preferences.

Important Note: This only applies for new Twilio registrations. Existing customers will not be required to take any additional action.



Explore what's new
by clicking a section below:

Cross-Suite

Workforce
Management

Payroll

HR

Talent and Culture

Release Resources

Bryte AI Assistant

HR Actions Enhancements

Reporting Enhancements

Conversational Reporting

Manager Controls for
Document Types

Mailbox Modernization

Twilio SMS Compliance
Opt-In Consent

Passkey Authentication

People Insights Rebranding

Passkey Authentication

OFF Feature
Delivered



USA | CAN |
EMEA | APAC

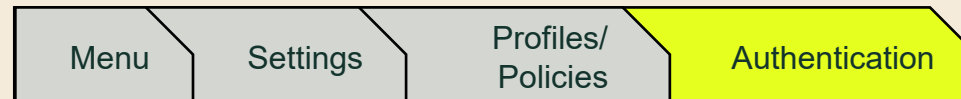


Customer
Idea

A new secure option to use a passkey to log in to UKG Ready by using Face ID, Touch ID, or a set PIN will be available. Additionally, a new *Passkeys* report will be available to view the details about Passkey usage and the option to manage individual Passkeys. For this release, desktop apps, desktop browsers, and mobile browsers will be supported, while the mobile app support will be available in a later release.

Important: Passkey Authentication will be available in the weeks following the release and will be rolled out by POD. For more information on when this will be available for your POD, please follow the [UKG Ready \(Announcements\)](#) group in the UKG Community™.

To activate this feature in your UKG Ready solution, go to...



and select the Enable Passkey Authentication checkbox within the applicable Security Profile(s).





Explore what's new
by clicking a section below:

Cross-Suite

Workforce
Management

Payroll

HR

Talent and Culture

Release Resources

Bryte AI Assistant

HR Actions Enhancements

Reporting Enhancements

Conversational Reporting

Manager Controls for
Document Types

Mailbox Modernization

Twilio SMS Compliance
Opt-In Consent

Passkey Authentication

People Insights Rebranding

People Insights Rebranding

ON

Feature
Delivered



USA | CAN |
EMEA | APAC



Customer
Idea

UKG Ready People Insights has been rebranded to UKG Ready Workforce Insights. This is a name change only and does not introduce any product or functionality changes. The update will be reflected in all areas of the UKG Ready solution.

Important: Workforce Insights is an add-on that requires an additional cost. If you are interested in adding Workforce Insights to your solution, please reach out to your account manager.





Explore what's new
by clicking a section below:

Cross-Suite

Workforce
Management

Payroll

HR

Talent and Culture

Release Resources

Workforce Management
Employee Self-Service
Assistants

New Continuous Time
Processing Experience

Pay Calculations
Compliance Updates

Recurring Shift Creation

Bulk Edit Shifts

Get a Sneak Peek of:

General

- ▶ Workforce Management
Employee Self-Service
Assistants

Timekeeping

- ▶ New Continuous Time
Processing Experience
- ▶ Pay Calculations Compliance
Updates

Scheduler

- ▶ Recurring Shift Creation
- ▶ Bulk Edit Shifts





Explore what's new
by clicking a section below:

Cross-Suite

Workforce
Management

Payroll

HR

Talent and Culture

Release Resources

Workforce Management
Employee Self-Service
Assistants

New Continuous Time
Processing Experience

Pay Calculations
Compliance Updates

Recurring Shift Creation

Bulk Edit Shifts

Workforce Management Employee Self-Service Assistants



Within the new Bryte AI Assistant panel, users can perform several Workforce Management-related tasks using a conversational approach. New Employee Self-Service Assistants include:

- Timesheet Change Requests Assistant – Helps submit retroactive timesheet corrections
- Timesheet Assistant – Provides details and information about the timesheet and options to view, correct, and submit timesheets.
- Punch/Clock Assistant – Allows the employee to clock in, clock out, or check current punch status.
- Holiday Assistant – Answers questions about upcoming holidays and pay rules associated with them.
- Time Off Calendar Assistant – Shows the time off calendar and helps employees check coverage before submitting requests.
- Time Off Request Assistant – Assists with Time Off Requests and checks accrual balances and eligibility.
- Accruals Assistant – Checks accrual balances and provides information for upcoming accrual postings based on policies.
- Leave Assistant – Guides employees through FMLA, personal leave, and other leave types.
- Schedule Assistant – Provides details of upcoming schedule and shift patterns.

Important: The Bryte AI Assistant is part of the Bryte AI for Ready — AI Assistant add-on that requires an additional cost. If you are interested in adding this to your solution, please reach out to your account manager.

[Jump to: Bryte AI Assistant](#)



Explore what's new
by clicking a section below:

Cross-Suite

Workforce
Management

Payroll

HR

Talent and Culture

Release Resources

Workforce Management
Employee Self- Service
Assistants

New Continuous Time
Processing Experience

Pay Calculations
Compliance Updates

Recurring Shift Creation

Bulk Edit Shifts

New Continuous Time Processing Experience

ON

Feature
Delivered



USA | CAN

A refreshed user experience that brings Time and Payroll together into an intuitive process is coming. New features include:

New Issue Resolution page

This experience will introduce a new Issue Resolution page that brings all issues and items to resolve prior to payroll, all on one page. This page will replace the Process Timesheets/Time Prep page. This page will be available to all customers who use UKG Ready Time.

Continuous Time Processing

New functionality will allow for continuous processing of timesheets in real time as changes are made. Continuous Time Sync to payroll will be available to customers who use both UKG Ready Time and UKG Ready Payroll.

Important: This new experience will be rolled out in phases.

This new experience will be the default. The option to toggle back to the classic view will be available for a transition phase.



Additional Feature Resources

[Payroll Processing Experience
Resource Page](#)

See the Payroll
Processing
changes here





Explore what's new
by clicking a section below:

Cross-Suite

Workforce
Management

Payroll

HR

Talent and Culture

Release Resources

Workforce Management
Employee Self- Service
Assistants

New Continuous Time
Processing Experience

Pay Calculations
Compliance Updates

Recurring Shift Creation

Bulk Edit Shifts

Pay Calculations Compliance Updates

ON

Feature
Delivered



USA | CAN |
EMEA | APAC

To maintain compliance across different industries and countries, new Pay Calculation updates will be available, including:

- A new Time Entry Based Shift Premium Rule that will allow one rule to handle all shift premium scenarios based on time entries.
- A new Australia Daylight Saving Time (DST) “By The Clock” setting that will allow timekeeping rules to ignore daylight savings change when calculating total hours.
- New Split Shift Premiums that will be able to pull in Weighted Average Overtime (WAOT) rates.





Explore what's new
by clicking a section below:

Cross-Suite

Workforce
Management

Payroll

HR

Talent and Culture

Release Resources

Workforce Management
Employee Self- Service
Assistants

New Continuous Time
Processing Experience

Pay Calculations
Compliance Updates

Recurring Shift Creation

Bulk Edit Shifts

Recurring Shift Creation

ON

Feature
Delivered



USA | CAN |
EMEA | APAC

The option to define shift patterns and automatically apply them across extended date ranges will be available with the new Recurring Shift Creation functionality. Once recurring shifts have been applied and certain timeframes or individual days need to be removed, the system will prompt schedule admins if they want to apply the changes to the single event or all events upon removal of the shift.



Explore what's new
by clicking a section below:

Cross-Suite

Workforce
Management

Payroll

HR

Talent and Culture

Release Resources

Workforce Management
Employee Self- Service
Assistants

New Continuous Time
Processing Experience

Pay Calculations
Compliance Updates

Recurring Shift Creation

Bulk Edit Shifts

Bulk Edit Shifts

ON

Feature
Delivered



USA | CAN |
EMEA | APAC

A new Manage in Bulk option for editing shifts will be available. Schedule administrators can select multiple shifts and change one or more schedule details, including:

- Day & time – Templates, Shift Type, Start and End Time, Total Hours, and Breaks
- Qualifications – Cost Centers, Skills, Credentials, and Certifications
- Assignments – Employee assigned
- Extras – Shift Premiums, Day Type, Workday Breakdown, and Notes



Explore what's new
by clicking a section below:

Cross-Suite

Workforce
Management

▶ Payroll

HR

Talent and Culture

Release Resources

New Payroll Processing
Experience

Payroll Employee Self-
Service Assistants

Secure 2.0 Act Roth Catch-
Up Updates

Cost Center Updates in Pay
Statements

Payroll

Get a Sneak Peek of:

- ▶ New Payroll Processing Experience
- ▶ Payroll Employee Self-Service Assistants
- ▶ Secure 2.0 Act Roth Catch-Up Updates
- ▶ Cost Center Updates in Pay Statements





Explore what's new
by clicking a section below:

Cross-Suite

Workforce
Management

Payroll

HR

Talent and Culture

Release Resources

New Payroll Processing
Experience

Payroll Employee Self-
Service Assistants

Secure 2.0 Act Roth Catch-
Up Updates

Cost Center Updates in Pay
Statements

Payroll

New Payroll Processing Experience

ON

Feature
Delivered



USA | CAN

A refreshed user experience that brings Time and Payroll together into an intuitive process is coming. New features and updates include:

Centralized Payroll Processing

Centralized data to process all payroll steps, including batch imports, on a single screen without having to navigate away from the Process Payroll screen.

Batch Import Improvements

When importing batches, the system will automatically create a new batch to separate import files to help reduce the risk of errors affecting multiple payrolls.

Supporting Payroll Reports Updates

Supporting reports will now be available in an action button above the reporting table. These reports will also be categorized more clearly depending on which part of the payroll process you are in.

Important: This new experience will be rolled out in phases.

This new experience will be the default. The option to toggle back to the classic view will be available for a transition phase.



Additional Feature Resources

[Payroll Processing Experience
Resource Page](#)

See the Time
Processing
changes here





Explore what's new
by clicking a section below:

Cross-Suite

Workforce
Management

Payroll

HR

Talent and Culture

Release Resources

New Payroll Processing
Experience

Payroll Employee Self-
Service Assistants

Secure 2.0 Act Roth Catch-
Up Updates

Cost Center Updates in Pay
Statements

Payroll

Payroll Employee Self-Service Assistants

ON Feature
Delivered



 **Bryte AI
Assistant**

Within the new Bryte AI Assistant panel, users can perform several payroll-related tasks using a conversational approach. New Employee Self-Service Assistants include:

- Direct Deposit Assistant – Add and modify banking information for direct deposit configurations and direct users to provide e-consent to receive pay statements electronically.
- Pay Info Assistant – Answer questions about pay statements, earnings and deduction codes, pay comparison, and upcoming pay dates.

Jump to:
Bryte AI
Assistant

Important: The Bryte AI Assistant is part of the Bryte AI for Ready — AI Assistant add-on that requires an additional cost. If you are interested in adding this to your solution, please reach out to your account manager.



Explore what's new
by clicking a section below:

Cross-Suite

Workforce
Management

Payroll

HR

Talent and Culture

Release Resources

New Payroll Processing
Experience

Payroll Employee Self-
Service Assistants

Secure 2.0 Act Roth Catch-
Up Updates

Cost Center Updates in Pay
Statements

Payroll

Secure 2.0 Act Roth Catch-Up Updates

ON

Feature
Delivered



USA

New Roth Catch-Up settings that will automatically create scheduled deductions for 403(b) and 457(b) plans for eligible employees will be available. These settings support both Catch-Up and Super Catch-Up contribution limits to ensure accuracy and plan compliance.





Explore what's new
by clicking a section below:

Cross-Suite

Workforce
Management

Payroll

HR

Talent and Culture

Release Resources

New Payroll Processing
Experience

Payroll Employee Self-
Service Assistants

Secure 2.0 Act Roth Catch-
Up Updates

Cost Center Updates in Pay
Statements

Cost Center Updates on Pay Statements

ON

Feature
Delivered



USA | CAN

When a Cost Center is assigned at the account level, the default cost center on open pay statements when the PST Pay Period End Date is later than the current date will be updated. This update triggers the recalculation that is needed without manual intervention.





Explore what's new
by clicking a section below:

Cross-Suite

Workforce
Management

Payroll

HR

Talent and Culture

Release Resources

Form I-9 Helper

Social Security Number
Requirements for Form I-9

Country-Specific Fields
Updates

HSA/FSA Price Per
Remaining Pay Period

Display Warnings for
Benefit Plan and Coverage
Changes

ACA Filing Portal

HR

Get a Sneak Peek of:

HR Core

- ▶ Form I-9 Helper
- ▶ Social Security Number Requirements for Form I-9
- ▶ Country-Specific Fields Updates

Benefits

- ▶ HSA/FSA Price Per Remaining Pay Period
- ▶ Display Warnings for Benefit Plan and Coverage Changes

ACA

- ▶ ACA Filing Portal





Explore what's new
by clicking a section below:

Cross-Suite

Workforce
Management

Payroll

HR

Talent and Culture

Release Resources

Form I-9 Helper

Social Security Number
Requirements for Form I-9

Country-Specific Fields
Updates

HSA/FSA Price Per
Remaining Pay Period

Display Warnings for
Benefit Plan and Coverage
Changes

ACA Filing Portal

Form I-9 Helper

ON Feature
Delivered



USA



**Bryte AI
Assistant**

Within the new Bryte AI Assistant panel, users can ask Bryte AI questions about the Form I-9 and verification processes using a conversational format.

**Jump to:
Bryte AI
Assistant**

Important: The Bryte AI Assistant is part of the Bryte AI for Ready — AI Assistant add-on that requires an additional cost. If you are interested in adding this to your solution, please reach out to your account manager.





Explore what's new
by clicking a section below:

Cross-Suite

Workforce
Management

Payroll

HR

Talent and Culture

Release Resources

Form I-9 Helper

Social Security Number
Requirements for Form I-9

Country-Specific Fields
Updates

HSA/FSA Price Per
Remaining Pay Period

Display Warnings for
Benefit Plan and Coverage
Changes

ACA Filing Portal

Social Security Number Requirements for Form I-9

OFF Feature
Delivered



Customer
Idea

A new global setting will be available to set the Social Security number (SSN) field in Section 1 of the Form I-9 required.

To activate this feature, go to...



and select the Require SSN for I-9 Section 1 checkbox under the HR Settings widget.



Explore what's new
by clicking a section below:

Cross-Suite

Workforce
Management

Payroll

HR

Talent and Culture

Release Resources

Form I-9 Helper

Social Security Number
Requirements for Form I-9

Country-Specific Fields
Updates

HSA/FSA Price Per
Remaining Pay Period

Display Warnings for
Benefit Plan and Coverage
Changes

ACA Filing Portal

Country-Specific Fields Updates

ON

Feature
Delivered



USA | CAN |
EMEA | APAC

A couple of updates to the country-specific fields will be available this release.

- **Mass Edit option** – The option to select multiple employees and update one or more country-specific fields will be available within the Mass Edit functionality.
- **API support** – New GET and PUT endpoints for country-specific fields will be available for the Employees v2 API.





Explore what's new
by clicking a section below:

Cross-Suite

Workforce
Management

Payroll

HR

Talent and Culture

Release Resources

Form I-9 Helper

Social Security Number
Requirements for Form I-9

Country-Specific Fields
Updates

HSA/FSA Price Per
Remaining Pay Period

Display Warnings for
Benefit Plan and Coverage
Changes

ACA Filing Portal

HSA/FSA Price Per Remaining Pay Period

ON

Feature
Delivered



USA



Customer
Idea

A new option to calculate remaining pay periods from the Benefit Eligibility Date for HSA/FSA contribution amounts will be available. This allows the contribution amounts to appear accurately based on an eligibility date after a new hire waiting period has occurred.





Explore what's new
by clicking a section below:

Cross-Suite

Workforce
Management

Payroll

HR

Talent and Culture

Release Resources

Form I-9 Helper

Social Security Number
Requirements for Form I-9

Country-Specific Fields
Updates

HSA/FSA Price Per
Remaining Pay Period

Display Warnings for
Benefit Plan and Coverage
Changes

ACA Filing Portal

Display Warnings for Benefit Plan and Coverage Changes

ON

Feature
Delivered



USA

For customers using UKG Ready Benefits with EDI file feeds, warning banners will appear when the following changes take place to an active plan:

- Saving/activating a new Benefit Plan
- Changing a Benefit Plan Group name
- Adding a new coverage tier
- Renaming an existing coverage tier

These warning banners will direct customers to open a Support case to ensure EDI continuity.





Explore what's new
by clicking a section below:

Cross-Suite

Workforce
Management

Payroll

HR

Talent and Culture

Release Resources

Form I-9 Helper

Social Security Number
Requirements for Form I-9

Country-Specific Fields
Updates

HSA/FSA Price Per
Remaining Pay Period

Display Warnings for
Benefit Plan and Coverage
Changes

ACA Filing Portal

HR – ACA

ACA Filing Portal

OFF Feature
Delivered



USA

A new service offering that will allow those customers using UKG Ready ACA Manager to file the necessary forms and e-files required for year-end ACA reporting. This new filing service is managed by UKG, rather than a third-party service, and offers both Federal and State filing options.

To learn more and add on this service, go to...



and search for UKG Ready ACA Services.

Important: The ACA Filing Portal is an add-on service that requires an additional cost and will be available in the weeks following the release. If you are interested in adding this service, please navigate to Solutions Exchange in the UKG Ready solution or reach out to your account manager.





Explore what's new
by clicking a section below:

Cross-Suite

Assign Back Up Users or
Skip Workflow to
Compensation Proposals

Workforce
Management

Interview Scheduling with
Google Calendar

Payroll

Hiring Stages Visibility
Enhancements

HR

Common Header for Career
and Applicant Portals

Talent and Culture

Learning Course
Recommendation Assistant

Career Path Deep Links

Release Resources

UKG Beacon
Enhancements

Get a Sneak Peek of:

Compensation

- ▶ Assign Back Up Users or Skip Workflow to Compensation Proposals

Recruitment

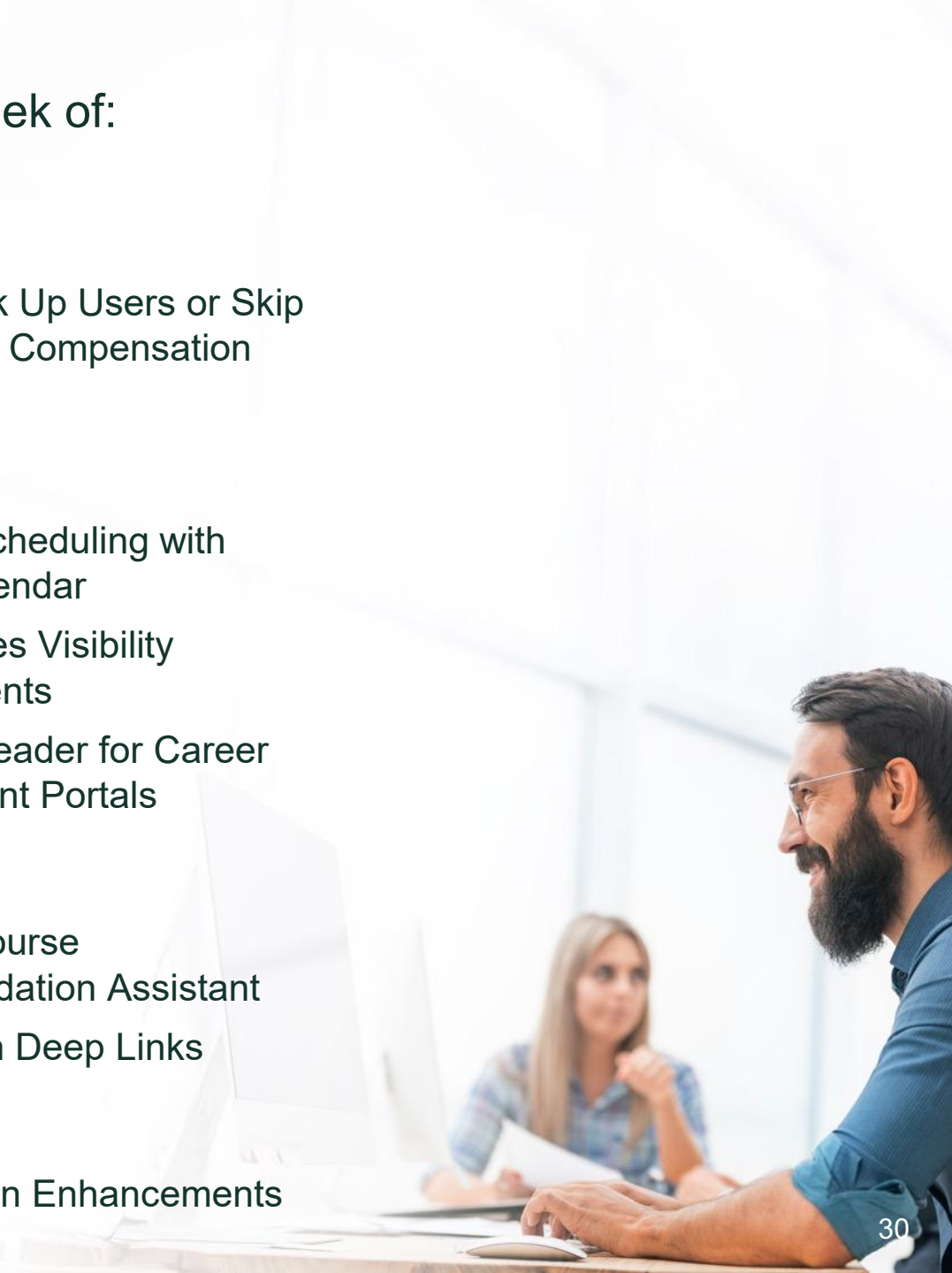
- ▶ Interview Scheduling with Google Calendar
- ▶ Hiring Stages Visibility Enhancements
- ▶ Common Header for Career and Applicant Portals

Learning

- ▶ Learning Course Recommendation Assistant
- ▶ Career Path Deep Links

UKG Beacon

- ▶ UKG Beacon Enhancements





Explore what's new
by clicking a section below:

Cross-Suite

Assign Back Up Users or
Skip Workflow to
Compensation Proposals

Workforce
Management

Interview Scheduling with
Google Calendar

Payroll

Hiring Stages Visibility
Enhancements

HR

Common Header for Career
and Applicant Portals

Talent and Culture

Learning Course
Recommendation Assistant

Release Resources

Career Path Deep Links

UKG Beacon
Enhancements

Assign Back Up Users or Skip Workflow to Compensation Proposals

ON

Feature
Delivered



USA | CAN |
EMEA | APAC

A Step Backup option will be added to the Compensation Proposal Request Workflow to allow admins to assign a Backup User Account or choose to skip to another step in the workflow when the Employee Manager field is blank.





Explore what's new
by clicking a section below:

Cross-Suite

Assign Back Up Users or
Skip Workflow to
Compensation Proposals

Workforce
Management

Interview Scheduling with
Google Calendar

Payroll

Hiring Stages Visibility
Enhancements

HR

Common Header for Career
and Applicant Portals

Learning Course
Recommendation Assistant

Talent and Culture

Career Path Deep Links

Release Resources

UKG Beacon
Enhancements

Interview Scheduling with Google Calendar

OFF Feature
Delivered



USA | CAN |
EMEA | APAC



Customer
Idea



Bryte
Embedded AI

A new option for Applicants to self-schedule their interviews via Google Calendar will be available. The self-scheduling functionality will provide suggested availability, standardized notification templates, and auto-generate virtual meeting links, location, or phone details.

To activate this feature, go to...



and select the Self-Schedule Interviews checkbox, then choose the Google option under the Connect org calendar drop-down. Follow further instructions.

Important: This feature is part of Bryte AI for Ready as an Embedded AI feature. For more information, check out this [Bryte AI for Ready resource page](#).





Explore what's new
by clicking a section below:

Cross-Suite

Assign Back Up Users or
Skip Workflow to
Compensation Proposals

Workforce
Management

Interview Scheduling with
Google Calendar

Payroll

Hiring Stages Visibility
Enhancements

HR

Common Header for Career
and Applicant Portals

Talent and Culture

Learning Course
Recommendation Assistant

Career Path Deep Links

Release Resources

UKG Beacon
Enhancements

Hiring Stages Visibility Enhancements

ON Feature
Delivered

 USA | CAN |
EMEA | APAC

 Customer
Idea

A new Visibility toggle on the Hiring Stages configuration that allows unused stages to be deactivated without deleting any historical data will be available. Inactivated stages will be removed from open requisitions and excluded from new requisitions and templates. Additionally, a new Visibility Status column will be added to the applicable reporting.

 **Additional Feature Resources**
[Product Spotlight Video](#)



Explore what's new
by clicking a section below:

Cross-Suite

Assign Back Up Users or
Skip Workflow to
Compensation Proposals

Workforce
Management

Interview Scheduling with
Google Calendar

Payroll

Hiring Stages Visibility
Enhancements

HR

Common Header for Career
and Applicant Portals

Talent and Culture

Learning Course
Recommendation Assistant

Release Resources

Career Path Deep Links

UKG Beacon
Enhancements

Common Header for Career and Applicant Portals

ON

Feature
Delivered



USA | CAN |
EMEA | APAC

A unified header across the Career and Applicant Portals will be introduced to ensure a consistent experience alongside the unified theming that currently exists.





Explore what's new
by clicking a section below:

Cross-Suite

Assign Back Up Users or
Skip Workflow to
Compensation Proposals

Workforce
Management

Interview Scheduling with
Google Calendar

Payroll

Hiring Stages Visibility
Enhancements

HR

Common Header for Career
and Applicant Portals

Talent and Culture

Learning Course
Recommendation Assistant

Career Path Deep Links

Release Resources

UKG Beacon
Enhancements

Learning Course Recommendation Assistant

ON

Feature
Delivered



USA



Bryte AI
Assistant

Within the new Bryte AI Assistant panel, users can engage with the conversational AI Assistant to gather recommendations on courses based on the skills they want to acquire. Additionally, managers can find, create, and assign new courses using the AI Assistant.

Jump to:
Bryte AI
Assistant

Important: The Bryte AI Assistant is part of the Bryte AI for Ready — AI Assistant add-on that requires an additional cost. If you are interested in adding this to your solution, please reach out to your account manager.





Explore what's new
by clicking a section below:

Cross-Suite

Assign Back Up Users or
Skip Workflow to
Compensation Proposals

Workforce
Management

Interview Scheduling with
Google Calendar

Payroll

Hiring Stages Visibility
Enhancements

HR

Common Header for Career
and Applicant Portals

Talent and Culture

Learning Course
Recommendation Assistant

Career Path Deep Links

Release Resources

UKG Beacon
Enhancements

Career Path Deep Links

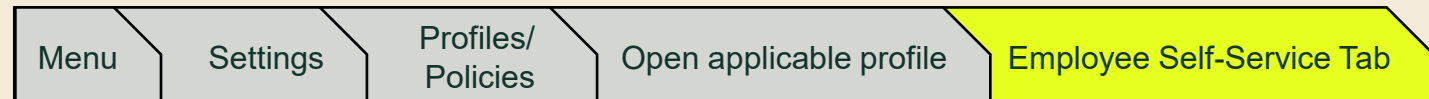
OFF Feature
Delivered



USA | CAN |
EMEA | APAC

A new Career Path deep link button in the *My Career > My Learning* page which will allow learners to access their Career Paths in Ready Learning both on web and mobile app.

To turn on the Career Path button, go to...



and select the Career Path option under the Learning section.





Explore what's new
by clicking a section below:

Cross-Suite

Assign Back Up Users or
Skip Workflow to
Compensation Proposals

Workforce
Management

Interview Scheduling with
Google Calendar

Payroll

Hiring Stages Visibility
Enhancements

HR

Common Header for Career
and Applicant Portals

Talent and Culture

Learning Course
Recommendation Assistant

Career Path Deep Links

Release Resources

UKG Beacon
Enhancements

UKG Beacon Enhancements

ON

Feature
Delivered



USA | CAN |
EMEA | APAC

Introducing several enhancements to the UKG Beacon offering to increase engagement and recognition.

- **Moments** – Enhancements to create richer, more interactive recognition, including highlights, mentions, photo and video uploads, draft saving, and deletion controls.
- **Occasions** – A new Occasions widget will be available to increase visibility of important milestones directly within the Moments feed, making celebrations easier to discover and act on.
- **Flexible permissions** – New Rewards and Recognition profile settings will be available to separate Poster and Commenter permissions for more flexibility.

Important: UKG Beacon is an add-on that requires an additional cost. If you are interested in adding UKG Beacon to your solution, please visit our [Rewards and Recognition page on ukg.com](#) or reach out to your account manager.





Explore what's new
by clicking a section below:

Cross-Suite

Workforce
Management

Payroll

HR

Talent and Culture

Release Resources

All Release
Readiness Resources

Explore all our Release Readiness Resources!



[UKG Ready Release Readiness Page](#)



[UKG Ready Release Spotlight Video](#)



readyConnect Panel (in product)



Release Notes (in product under ***My Info > Help > Online Documentation***)

Note: These are only some of the features being delivered in this release; for details on everything included in the release, check out the Release Notes.

