

UKG Ready  
Release 102 Highlights

Explore what's new  
by clicking a section below:



Cross-Suite

Workforce  
Management

Payroll

HR

Talent

Release Resources

# UKG<sup>TM</sup> Ready

November 2025

## Release Highlights

Release 102





Explore what's new  
by clicking a section below:

Cross-Suite

Workforce  
Management

Payroll

HR

Talent

Release Resources

Microsoft Entra ID  
Integration

OAuth Persistence and  
Removal

Frozen Columns in Reports

Compact View for Reports

CSV No Quotes Export File  
Types

Great Place to Work New  
Fields

Cross-Suite

## Get a Sneak Peek of:

### Core

Microsoft Entra ID Integration

OAuth Persistence and Removal

### Experience

Frozen Columns in Reports

Compact View for Reports

CSV No Quotes Export File Types

### Great Place To Work

Great Place to Work New Fields





Explore what's new  
by clicking a section below:

Cross-Suite

Workforce  
Management

Payroll

HR

Talent

Release Resources

Microsoft Entra ID  
Integration

OAuth Persistence and  
Removal

Frozen Columns in Reports

Compact View for Reports

CSV No Quotes Export File  
Types

Great Place to Work New  
Fields

Cross-Suite – Core

# Microsoft Entra ID Integration

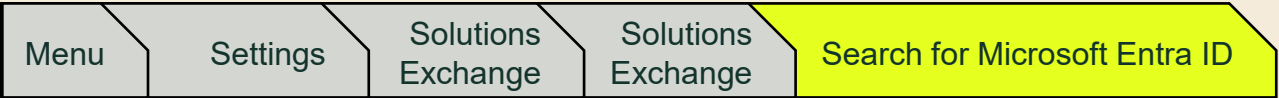
OFF Feature  
Delivered



USA | CAN |  
EMEA | APAC

A brand-new integration with Microsoft Entra ID that allows users to manage employee accounts across UKG Ready and Microsoft systems. This integration syncs key attributes like name, job title, manager, etc., from UKG Ready to Microsoft systems and is available to add on through the Solutions Exchange.

To activate this feature in your UKG Ready solution, go to...



and click Learn More to install.



Explore what's new  
by clicking a section below:

Cross-Suite

Workforce  
Management

Payroll

HR

Talent

Release Resources

Microsoft Entra ID  
Integration

OAuth Persistence and  
Removal

Frozen Columns in Reports

Compact View for Reports

CSV No Quotes Export File  
Types

Great Place to Work New  
Fields

Cross-Suite – Core

# OAuth Persistence and Removal

ON Feature  
Delivered



USA | CAN |  
EMEA | APAC

When users access third party applications through your solution (Great Place To Work, Employee Navigator, etc.) they no longer need to re-sign in. They can now give their consent to remember their login information and bypass the need to re-sign in or reauthenticate to use those third-party solutions. If a user decides they no longer want these applications to use their login information, they can remove their consent within their Employee Profile.



Explore what's new  
by clicking a section below:

Cross-Suite

Workforce  
Management

Payroll

HR

Talent

Release Resources

Microsoft Entra ID  
Integration

OAuth Persistence and  
Removal

Frozen Columns in Reports

Compact View for Reports

CSV No Quotes Export File  
Types

Great Place to Work New  
Fields

Cross-Suite – Experience

# Frozen Columns in Reports

ON Feature  
Delivered

USA | CAN |  
EMEA | APAC

Customer  
Idea

Freeze up to five columns in a single report per report view. Users will be able to choose which columns they want to freeze by pinning the column in the report table or when adding/removing a column. Columns will pin to the left side of the report and allow users to see critical data when accessing key information.



UKG Ready  
Release 102 Highlights

Explore what's new  
by clicking a section below:

Cross-Suite

Workforce  
Management

Payroll

HR

Talent

Release Resources

Microsoft Entra ID  
Integration

OAuth Persistence and  
Removal

Frozen Columns in Reports

Compact View for Reports

CSV No Quotes Export File  
Types

Great Place to Work New  
Fields

Cross-Suite – Experience

# Compact View for Reports



Two new data density options will be available for users to customize their report views:

- **Standard** – uses existing row heights/paddings
- **Compact** – uses slimmer row heights/paddings

In both views all banded rows will have darker shading and pull in the designated system theme.

My Team > Employee Information

Employee Information

View: R02 Frozen Columns & Data Density Demo Columns (1)

| Employee                             | Employee Status | Employee EIN | Departments(Division) | Supervisor Name           |
|--------------------------------------|-----------------|--------------|-----------------------|---------------------------|
| Sherry Jones<br>Employee ID: 0023    | Active          | Chicago      | 123-456               | Kathy Mae Watts (Chi...   |
| Randy Mason<br>Employee ID: 080      | Active          | Chicago      | Marketing Co-Op       | Jacqueline Montgomer...   |
| Dave Grant<br>Employee ID: 0038      | Active          | Chicago      | Support Services      | Kathy Mae Watts (Chi...   |
| Paul Jones<br>Employee ID: 0017      | Active          | Chicago      | Louisville            | Kathy Mae Watts (Chi...   |
| Derrick Tyler<br>Employee ID: 30     | Active          | Chicago      | Software Development  | Jacqueline Montgomer...   |
| Cindy A. Scott<br>Employee ID: 073   | Active          | Chicago      | Arizona               | Jacqueline Montgomer...   |
| Aaron P. Asa, Jr<br>Employee ID: 095 | Active          | Chicago      | Marketing Co-Op       | Jacqueline Montgomer...   |
| GE Start Stop<br>Employee ID: 302    | Active          | Chicago      | Louisville            | Sebastian Ahrenberg (...  |
| John Zandbar<br>Employee ID: AA329   | Active          | Chicago      | 123-456               | Valerie Legavulin (Chi... |
| Coe-Ray Field<br>Employee ID: AA323  | Active          | Chicago      | 123-456               | Kathy Mae Watts (Chi...   |

1-20 of 127 20 per page Page 1 of 7

Standard View

My Team > Employee Information

Employee Information

View: R02 Frozen Columns & Data Density Demo Columns (1)

| Employee                              | Employee Status | Employee EIN | Departments(Division) | Supervisor Name           |
|---------------------------------------|-----------------|--------------|-----------------------|---------------------------|
| Sherry Jones<br>Employee ID: 0023     | Active          | Chicago      | 123-456               | Kathy Mae Watts (Chi...   |
| Randy Mason<br>Employee ID: 080       | Active          | Chicago      | Marketing Co-Op       | Jacqueline Montgomer...   |
| Dave Grant<br>Employee ID: 0038       | Active          | Chicago      | Support Services      | Kathy Mae Watts (Chi...   |
| Paul Jones<br>Employee ID: 0017       | Active          | Chicago      | Louisville            | Kathy Mae Watts (Chi...   |
| Derrick Tyler<br>Employee ID: 30      | Active          | Chicago      | Software Development  | Jacqueline Montgomer...   |
| Cindy A. Scott<br>Employee ID: 073    | Active          | Chicago      | Arizona               | Jacqueline Montgomer...   |
| Aaron P. Asa, Jr<br>Employee ID: 095  | Active          | Chicago      | Marketing Co-Op       | Jacqueline Montgomer...   |
| GE Start Stop<br>Employee ID: 302     | Active          | Chicago      | Louisville            | Sebastian Ahrenberg (...  |
| John Zandbar<br>Employee ID: AA329    | Active          | Chicago      | 123-456               | Valerie Legavulin (Chi... |
| Coe-Ray Field<br>Employee ID: AA323   | Active          | Chicago      | 123-456               | Kathy Mae Watts (Chi...   |
| SPTEST2 SPTEST2<br>Employee ID: AA323 | Active          | Chicago      | 123-456               | Kathy Mae Watts (Chi...   |
| Old Test<br>Employee ID: 1894         | Term            | Chicago      | 123-456               | Kathy Mae Watts (Chi...   |
| Kyle Endu<br>Employee ID: 0000        | Active          | Chicago      | Software Development  | Friedrich Hayek (Chic...  |
| Spa015 Test                           |                 | Chicago      | Louisville            | Valerie Legavulin (Chi... |

1-20 of 127 20 per page Page 1 of 7

Compact View

**Important:** Compact Views for Reports will be available in the weeks following the release. For more information on when this will be available, please follow the [UKG Ready \(Announcements\)](#) group in the UKG Community™.





Explore what's new  
by clicking a section below:

Cross-Suite

Workforce  
Management

Payroll

HR

Talent

Release Resources

Microsoft Entra ID  
Integration

OAuth Persistence and  
Removal

Frozen Columns in Reports

Compact View for Reports

CSV No Quotes Export File  
Types

Great Place to Work New  
Fields

Cross-Suite – Experience

# CSV No Quotes Export File Type

ON Feature  
Delivered

USA | CAN |  
EMEA | APAC

Customer  
Idea

Generate a CSV report export file that removes all quote marks surrounding values. It will be labeled as: **CSV (No Quote Marks)**.



Explore what's new  
by clicking a section below:

Cross-Suite

Workforce  
Management

Payroll

HR

Talent

Release Resources

Microsoft Entra ID  
Integration

OAuth Persistence and  
Removal

Frozen Columns in Reports

Compact View for Reports

CVS No Quotes Export File  
Types

Great Place to Work New  
Fields

Cross-Suite – Great Place to Work

# Great Place to Work New Fields

ON Feature  
Delivered



USA | CAN

💡 Customer  
Idea

Two new fields have been added to the Employee Data File within Great Place To Work: Manager Levels and Employee Tenure. This will provide better insight into any correlation management or tenure has with sentiment.

**Important:** This feature is part of the Great Place To Work Hub add-on that requires an additional cost. If you are interested in adding the Great Place To Work Hub to your solution, please reach out to your account manager.





Explore what's new  
by clicking a section below:

Cross-Suite

Workforce  
Management

Payroll

HR

Talent

Release Resources

Group Punch

Annualization and  
Modulation

Limit List Enhancements

Dynamic Period Grants

Open Shift Costing

Workforce Management

# Get a Sneak Peek of:

## Timekeeping

Group Punch

Annualization and Modulation

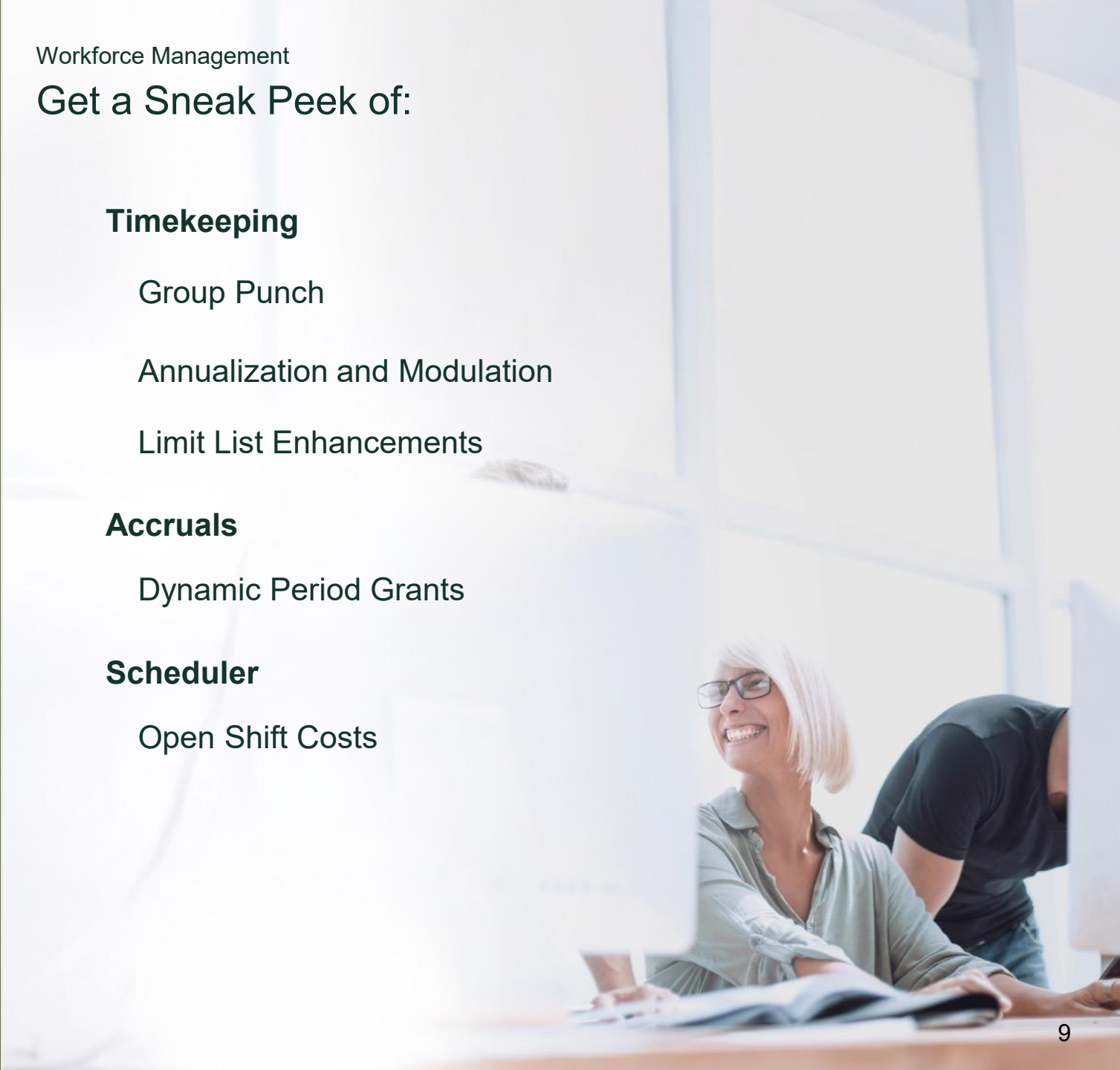
Limit List Enhancements

## Accruals

Dynamic Period Grants

## Scheduler

Open Shift Costs





Explore what's new  
by clicking a section below:

Cross-Suite

Workforce  
Management

Payroll

HR

Talent

Release Resources

Group Punch

Annualization and  
Modulation

Limit List Enhancements

Dynamic Period Grants

Open Shift Costing

# Group Punch

ON

Feature  
Delivered



USA | CAN |  
EMEA | APAC

A new mobile-first option that will allow managers to initiate bulk timekeeping options. From the new Group Punch screen, managers will be able to select multiple employees and complete tasks, including:

- Submit bulk actions like Punch In, Punch Out, or Cost Center Change
- View their current punch status
- Create groups of employees



## Additional Feature Resources

[Watch: Product Spotlight Video](#)





Explore what's new  
by clicking a section below:

Cross-Suite

▶ Workforce  
Management

Payroll

HR

Talent

Release Resources

Group Punch

Annualization and  
Modulation

Limit List Enhancements

Dynamic Period Grants

Open Shift Costing

# Annualization and Modulation



Feature  
Delivered



EMEA | APAC

This new PayCalc rule will tracks hours over a full year and uses repeating/custom week-based cycles. This rule provides multiple ways to set target hours, track cumulative work, and calculate overtime based on your employees' contracts or schedules to help ensure your organization remains compliant.





Explore what's new  
by clicking a section below:

Cross-Suite

▶ Workforce  
Management

Payroll

HR

Talent

Release Resources

Group Punch

Annualization and  
Modulation

Limit List Enhancements

Dynamic Period Grants

Open Shift Costing

# Limit List Enhancements

**ON** Feature  
Delivered



USA | CAN |  
EMEA | APAC

Enhancements to the Limit List functionality will be available, allowing multiple Root node selection and the option to include Subtrees. Once the Enable Multiple Subtree Selection toggle is turned on, when a parent node is selected, all child nodes will be automatically included, reducing the manual selection of each Cost Center option. The new option will allow admins to configure up to 300 Cost Centers as part of the list.



Explore what's new  
by clicking a section below:

Cross-Suite

Workforce  
Management

Payroll

HR

Talent

Release Resources

Group Punch

Annualization and  
Modulation

Limit List Enhancements

Dynamic Period Grants

Open Shift Costing

# Dynamic Period Accrual Grants



Feature  
Delivered



USA | CAN |  
EMEA | APAC

A new option to grant accruals based on an Employee Date will be available. Administrators will be able to define the grant period based on the following dates:

- Date Hired
- Date Started
- Date Re-Hired
- Seniority Date
- Birthday
- Benefits Date
- Custom Date

This enhanced dynamic period definition will be applicable to key accrual rules such as:

- Fixed Grant
- Time Worked Grant
- Balance Limit within Period
- Max Accrued Amount
- Tenure-Based Grant rules





Explore what's new  
by clicking a section below:

Cross-Suite

▶ Workforce  
Management

Payroll

HR

Talent

Release Resources

Group Punch

Annualization and  
Modulation

Limit List Enhancements

Dynamic Period Grants

Open Shift Costing

# Open Shift Costs



Feature  
Delivered



USA | CAN |  
EMEA | APAC

A new Pay Calculation field for Open Shifts will be available. This will allow Open shifts to be accounted for in Schedule Cost estimates.





Explore what's new  
by clicking a section below:

Cross-Suite

Workforce  
Management

Payroll

HR

Talent

Release Resources

Payroll Landing Page  
Updates

Nacha Operating Rules-  
ACH Description Field

Money Movement Options  
for Canada and Australia

W-4 Web Forms

Payroll

# Get a Sneak Peek of:

Payroll Landing Page Updates

Nacha Operating Rules- ACH Description Field

Money Movement Options for Canada and  
Australia

W-4 Web Forms







Explore what's new  
by clicking a section below:

Cross-Suite

Workforce  
Management

Payroll

HR

Talent

Release Resources

Payroll Landing Page  
Updates

Nacha Operating Rules-  
ACH Description Field

Money Movement Options  
for Canada and Australia

W-4 Web Forms

Payroll

# Payroll Landing Page Updates



Feature  
Delivered



USA

Based on your feedback after the Payroll Landing Page was released in R101, additional payroll metadata and conditional tags will be added to the cards to provide helpful information related to your payroll.

New metadata:

Pay Date

Submit by date and time when configured for the scheduled payroll

New conditional tags:

Urgent – amber tag added to indicate when the scheduled submit date is within 2 hours of the current time

Overdue – red tag added to indicate when a payroll has not been processed by the scheduled submit date and time





Explore what's new  
by clicking a section below:

Cross-Suite

Workforce  
Management

Payroll

HR

Talent

Release Resources

Payroll Landing Page  
Updates

Nacha Operating Rules-  
ACH Description Field

Money Movement Options  
for Canada and Australia

W-4 Web Forms

Payroll

# Nacha Operating Rules- ACH Description Field

**ON** Feature  
Delivered



USA

Customer  
Idea

A new validation to the ACH Descr field within the Default Bank Accounts > Employee Direct Deposits type will be added to ensure the first 7 characters are "PAYROLL". This field will be automatically updated for all companies. All prenotes will also be updated to reflect "PAYROLLPRE" in the description.





Explore what's new  
by clicking a section below:

Cross-Suite

Workforce  
Management

Payroll

HR

Talent

Release Resources

Payroll Landing Page  
Updates

Nacha Operating Rules-  
ACH Description Field

Money Movement Options  
for Canada and Australia

W-4 Web Forms

Payroll

# Money Movement Options for Canada and Australia



Feature  
Delivered



CAN | APAC



Customer  
Idea

New Money Movement (MM) options will be made available to ensure direct deposit files contain correct data and employees are paid timely. These options will be added in the following regions:

Canada

- The option to add a transmission header
- The option to control sequence numbers

Australia

- The option to make the name field in the Employee Direct Deposit settings mandatory





Explore what's new  
by clicking a section below:

Cross-Suite

Workforce  
Management



Payroll

HR

Talent

Release Resources

Payroll Landing Page  
Updates

Nacha Operating Rules-  
ACH Description Field

Money Movement Options  
for Canada and Australia

W-4 Web Forms

Payroll

# W-4 Web Forms



Feature  
Delivered



USA

All existing W-4 withholding forms will be converted to web forms within the solution. This update will provide a fully responsive form experience that works across both desktop and mobile when entering data into the state tax withholding forms. Users will still have access to download the signed forms in a .pdf format for printing.





Explore what's new  
by clicking a section below:

Cross-Suite

Workforce  
Management

Payroll

HR

Talent

Release Resources

E-Verify Updates

Extend Open Enrollment  
Dates

Displaying Real Time  
Premium Contributions

Penalty Risk Assessment  
Report from Trusaic

Average Hours in  
Measurement Period  
Column

HR

Get a Sneak Peek of:

**HR Core**

E-Verify Updates

**Benefits**

Extend Open Enrollment Dates

Displaying Real Time Premium Contributions

**ACA**

Penalty Risk Assessment Report  
from Trusaic

Average Hours in Measurement  
Period Column





Explore what's new  
by clicking a section below:

Cross-Suite

Workforce  
Management

Payroll

HR

Talent

Release Resources

E-Verify Updates

Extend Open Enrollment  
Dates

Displaying Real Time  
Premium Contributions

Penalty Risk Assessment  
Report from Trusaic

Average Hours in  
Measurement Period  
Column

# E-Verify Updates

**ON** Feature  
Delivered



USA

Introducing a new button within our E-Verify integration: Resend Memorandums of Understanding (MOU). The new option to Resend MOUs eliminates the need to go through support and allows users to self-serve.





Explore what's new  
by clicking a section below:

Cross-Suite

Workforce  
Management

Payroll

HR

Talent

Release Resources

E-Verify Updates

Extend Open Enrollment  
Dates

Displaying Real Time  
Premium Contributions

Penalty Risk Assessment  
Report from Trusaic

Average Hours in  
Measurement Period  
Column

# Extend Open Enrollment Dates



Feature  
Delivered



USA | CAN |  
EMEA | APAC

When administrators change or extend an organization’s open enrollment dates, employees who have in-progress enrollments will have their enrollment dates extended as well. A notification will be sent to applicable employees when this change is made.







Explore what's new  
by clicking a section below:

Cross-Suite

Workforce  
Management

Payroll

HR

Talent

Release Resources

E-Verify Updates

Extend Open Enrollment  
Dates

Displaying Real Time  
Premium Contributions

Penalty Risk Assessment  
Report from Trusaic

Average Hours in  
Measurement Period  
Column

# Displaying Real Time Premium Contributions



The employee contribution field within the Benefit Plan Designer will now dynamically calculate and display the result in real time once the premium amount and employer contribution is entered.



Explore what's new  
by clicking a section below:

Cross-Suite

Workforce  
Management

Payroll

HR

Talent

Release Resources

E-Verify Updates

Extend Open Enrollment  
Dates

Displaying Real Time  
Premium Contributions

Penalty Risk Assessment  
Report from Trusaic

Average Hours in  
Measurement Period  
Column

# Penalty Risk Assessment Report from Trusaic



Feature  
Delivered



USA

For customers using the ACA Filing powered by Trusaic service, an option to initiate an on-demand Penalty Risk Assessment report will be added within the solution. This report can be directly downloaded from the applicable tax year under the *ACA Year End Processing* report.

**Important:** ACA Filing powered by Trusaic is an add-on that requires an additional cost. If you are interested in adding this service to your solution, you can do so through the Solutions Exchange.





Explore what's new  
by clicking a section below:

Cross-Suite

Workforce  
Management

Payroll

HR

Talent

Release Resources

E-Verify Updates

Extend Open Enrollment  
Dates

Displaying Real Time  
Premium Contributions

Penalty Risk Assessment  
Report from Trusaic

Average Hours in  
Measurement Period  
Column

# Average Hours in Measurement Period Column



Feature  
Delivered



USA

A new Average hours in initial measurement period column will be added to the *ACA Data Detailed* report.





Explore what's new  
by clicking a section below:

Cross-Suite

Workforce  
Management

Payroll

HR

Talent

Release Resources

Relabel Date Fields

Learning Notification Links

Curricula Assignments from  
Ready

Talent

# Get a Sneak Peek of:

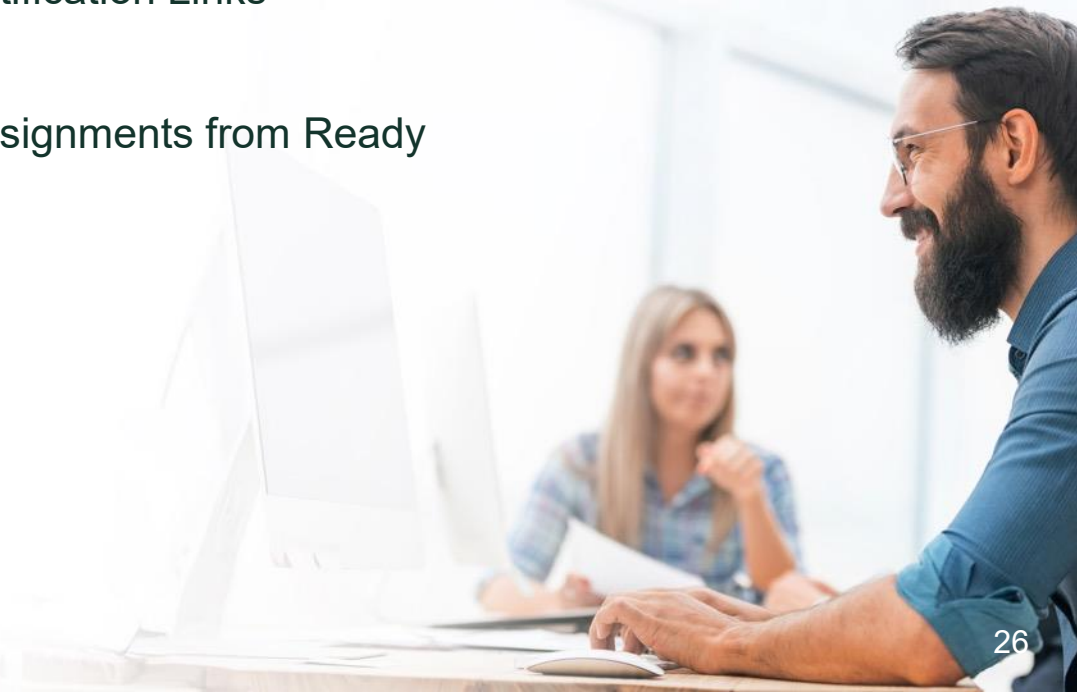
## Performance

Relabel Date Fields

## Learning

Learning Notification Links

Curricula Assignments from Ready





Explore what's new  
by clicking a section below:

Cross-Suite

Workforce  
Management

Payroll

HR



Talent

Release Resources

Relabel Date Fields

Learning Notification Links

Curricula Assignments from  
Ready

# Relabel Date Fields



Feature  
Delivered



USA | CAN |  
EMEA | APAC

Date fields in the Performance Review Profile have been re-labeled and ordered to decrease confusion when setting up review profiles and will now align with performance review workflows.





Explore what's new  
by clicking a section below:

Cross-Suite

Workforce  
Management

Payroll

HR



Talent

Release Resources

Relabel Date Fields

Learning Notification Links

Curricula Assignments from  
Ready

# Learning Notification Links



Feature  
Delivered



USA | CAN |  
EMEA | APAC

When accessing links from Learning notifications users will now be able to use their UKG Ready credentials to sign in and be redirected to the course/curricula from the notification.

**Important:** Learning Notification Links will be available in the weeks following the release. For more information on when this will be available, please follow the [UKG Ready \(Announcements\)](#) group in the UKG Community™.





Explore what's new  
by clicking a section below:

Cross-Suite

Workforce  
Management

Payroll

HR

Talent

Release Resources

Relabel Date Fields

Learning Notification Links

Curricula Assignments from  
Ready

# Curricula Assignments from Ready



Feature  
Delivered



USA | CAN |  
EMEA | APAC



Customer  
Idea

Admins and managers will be about to assign Curricula directly to employees ensuring seamless assignment. We are also introducing a new Type field so admins can easily distinguish between Courses and Curricula.







Explore what's new  
by clicking a section below:

Cross-Suite

Workforce  
Management

Payroll

HR

Talent

Release Resources

All Release  
Readiness Resources

Release Resources

Explore all our Release Readiness Resources!



[UKG Ready Release Readiness Page](#)



[UKG Ready Release Spotlight Video](#)



readyConnect Panel (in product)



Release Notes (in product under ***My Info > Help > Online Documentation***)

**Note:** These are only some of the features being delivered in November; for details on everything included in the release, check out the November Release Notes.

